

Using Ally in Canvas

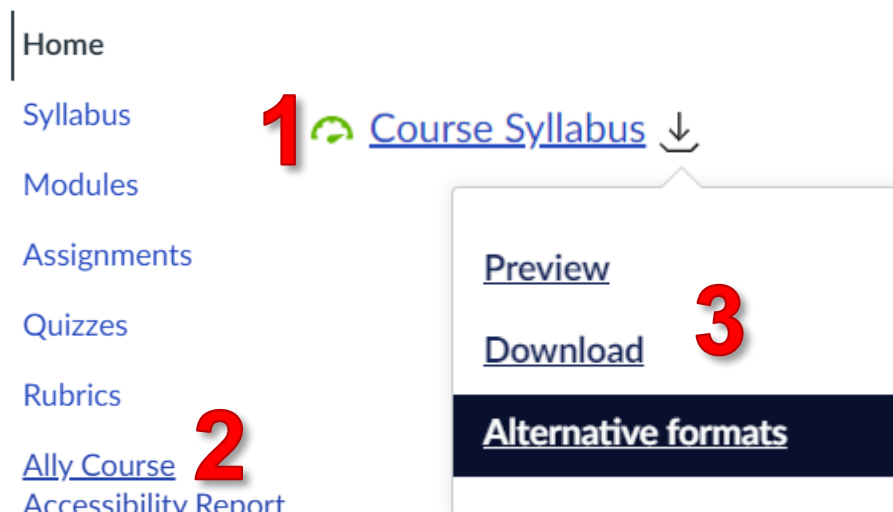
A Guide for Educators

Created by the Academic Commons at Thomas Jefferson University

Ally is a tool that promotes inclusive learning experiences for all learners. Ally integrates with Canvas to gauge your content's accessibility and provides guidance and tips on making your course files usable and accessible to all your students. Ally provides instructor feedback and automatically creates alternative formats of course resources for students.

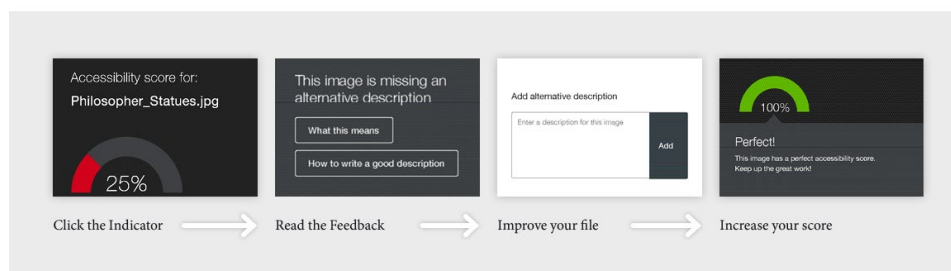
Where do I see Ally in Canvas?

- Ally has three main components: (1) accessibility indicators, (2) course accessibility report, and (3) alternative formats. Only the alternative formats are visible to learners.



Accessibility Indicators



- Indicators are meant to raise awareness about your course content's accessibility while providing feedback about how to remove barriers to use.






- By default, students in a Canvas course will not see the indicators – they are meant to provide feedback to the instructor.
- You can see the indicators in the Files area, or wherever you have embedded files in the Rich Content Editor.
- Selecting the indicator will give you on-screen instructions on how to improve the accessibility score of your materials.

Alternative Formats

- Ally provides students with downloadable alternative formats for course files and content you create directly in Canvas, helping students engage with material in the ways that they learn best. Students can retrieve alternative formats of course files at any time, directly from Canvas.
- Next to each file in Canvas is a drop-down arrow. Choosing that drop-down gives the option to select an alternative format. Canvas-created content (e.g., the Syllabus down below) displays a clickable indicator next to the title of each resource.
 - ❖ Alternative formats include PDFs, ePub, Audio, HTML, and more.

Course Syllabus  

Psychology 101

 [Course Syllabus](#)  

[Preview](#)

[Download](#)

[Alternative formats](#)

- To learn more about alternative formats, check out the **Using Ally in Canvas** student guide. *(to be linked later)*

Course Accessibility Report

- The Course Accessibility Report gives you a big-picture overview of the accessibility of your course. It also provides several pathways to remediate materials by prioritizing easy fixes, least accessible files, or more significant issues.
 - ❖ Access the Course Accessibility report from the course navigation menu.

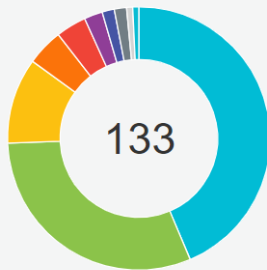
Course accessibility score



Jacob Santos Sandbox

Overview

Content



All course content

Image	58
Page	41
Assignment	14
Discussion topic	6
Word document	5
PDF document	3
Presentation	2
Announcement	2
Quiz	1
Syllabus	1

View



Content with the easiest issues to fix

23

Start



Fix low scoring content

21

Start

Ally Help

- Check out [Ally's Instructor Package: Resources & Support](#) documentation
- Contact Academic Commons and [Schedule a Consultation](#) on our website.
- Campus Specific Support: Available Monday – Friday 8AM – 6PM
 - ❖ Contact the Academic Commons' Educational Technology Support team at EdTech.Support@lists.jefferson.edu or call (215) 503-2830.